

Quick Start Guide

NIGHTWAVE^{DIGITAL}

Box Contents



1x Nightwave Digital



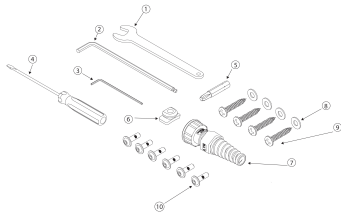
1x PoE Injector

Cables & Connectors



- ① 1x Camera cable (10m/30ft)
- ② 1x Network ethernet cable (1.5m/5ft)
- ③ 1x Power 18 AWG/2 cable (1.5m/5ft)
- ④ 2x RJ45 terminal
- ⑤ 1x Cable zip tie

Tools, Screws, Fittings



- ① 1x 7/16-inch open end wrench
- ② 1x 3/16-inch hex key (large)
- ③ 1x 2 mm hex key (small)
- ④ 1x 3/32-inch screwdriver
- ⑤ 1x #3 Phillips bit, 1/4-inch hex shank
- ⑥ 1x Camera cable grommet
- ⑦ 1x RJ45 DIY camera connector
- ⑧ 4x #12 flat washer
- ⑨ 4x #12 mounting screw
- ⑩ 6x M3x0.5x10mm cover screw

Read BEFORE Installation

Best Install Location



Flat, level mounting surface that won't weaken the boat's structure



Minimize obstructions to camera's field of view

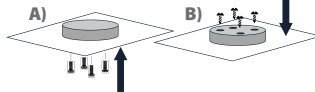


Highest possible location

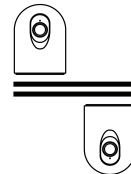


More than 1m from any interference source (magnetic compass, radio, generator, motor)

Mounting Options

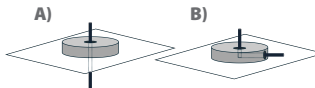


A) Bolt from under surface into base plate above, or B) use provided screws to attach through base plate onto surface.



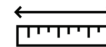
Install right-side-up or upside-down.

Cable Routing Options



Route cable through A) baseplate and surface, or B) exit from the edge of the device, across the surface.

Ensure cable length and routing is adequate for installation location interference (radios, radar, generators, motors).

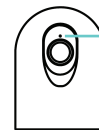


Read BEFORE Use

Update to latest firmware for best performance



sionyx.com/pages/nightwave-firmware



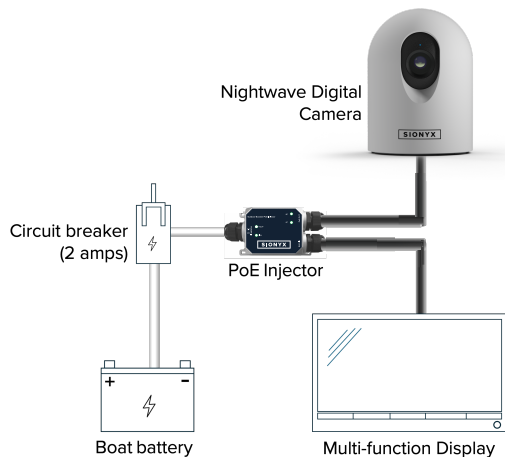
Status LEDs

- Starting Up
- Ready
- Video Active
- Other: See Install Guide

Quick Start Guide (Cont.)

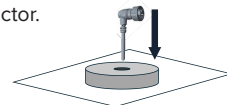
NIGHTWAVE[®]DIGITAL

Wiring Overview Diagram



IMPORTANT

Feed ethernet cable down through baseplate first, BEFORE routing cable to PoE injector.



Do not try to feed cable up through baseplate.

**View Complete
Installation Guide**



- ① Nightwave Digital is powered from the IP67 PoE injector
- ② IP67 PoE injector has Vin range from 9 V DC to 36 V DC, and Vout 48 V DC
- ③ Suggested power cable for the PoE injector is 18 AWG/2 Duplex DC Wire
- ④ Install the camera into its own breaker or a panel switch using a 2 A fuse
- ⑤ Check the network and power requirements of your display. An isolation coupler is required with some Garmin and other displays
- ⑥ Use a professional installer. If not possible, please be careful with cable routing and power

Register Your Device

Register your device and stay up to date by visiting the URL or scanning the QR Code below.



sionyx.com/register

Need Help?



SUPPORT RESOURCES

sionyx.com/support



SUBMIT A TICKET

sionyx.com/contact



CALL / SCHEDULE CALLBACK

866-827-8237 | sionyx.com/support



EMAIL

support@sionyx.com

THIS IS SIONYX.

We are committed to enhancing visibility, safety and performance in low-light environments, empowering professionals and adventurers with cutting-edge digital night vision technology.